

THE GREATEST MASTERPIECE OF ROLLER

ROLLENT



**ROLLENT**  
Daeyang Rollent Co., Ltd.

DAEYANG ROLLENT CO.,LTD. ; **Contents**

## **1. Introduction**

- Message from the CEO 04
- Brief History 05

## **2. Technology & Quality**

- Major Technology 06
- Quality Management 08

## **3. Products**

- Conveyor Idlers 10
- Conveyor Rollers 22

# INTRODUCTION

## Message from CEO

# Dear Customers and Business Partners,



President **Ra, Bok Nam**

**“We, Daeyang Rollent Co., Ltd. have established a great reputation as a leading conveyor roller manufacturer since 1990.”**

We have been doing our best to supply the best-quality products with high-end technologies we have in order to live up to our customers’s high expectations.

Many patents, awards we have received only represent a minor part of our many achievements.

We have been supplying our best-quality products to a variety of companies that lead the industries, which consists of mining, construction, cements, thermal power plants, factory automation, etc. globally.

The credibility we have built represents the history and the future of our company.

We, Daeyang Rollent Co., Ltd., will step up our efforts to maintain our world-class company.

**Thank you very much.**

## Brief History

- 1990's** 08 Established Daeyang Industry Co.
- 1999's** 01 Incorporated as Daeyang Rollent Co., Ltd.
- 05 Designated as Venture company by SMBA
- 08 Opened a new factory in Sihwa Industrial Complex
- 2000's** 11 Designated as Promising Export Company by SMBA
- 2001's** 08 Acquired ISO 9001 certificate
- 09 Certified as Qualified maintenance company of power plants by KEPCO
- 2005's** 03 Acquired NEP(New Excellent Product) certificate from the government
- 04 Selected as qualified company for R&D project by SMBA
- 09 Acquired Excellent Product certificate from the Public Procurement Service
- 10 Received ministerial citation for development of excellent product
- 11 Received ministerial citation for new technology development
- 11 Participated in R&D project of SMBA
- 11 Acquired NEP(New Excellent Product) certificate from the government
- 2006's** 07 Certified productivity management system by KPC
- 08 Opened an overseas factory in Indonesia
- 2007's** 09 Acquired NEP(New Excellent Product) certificate from the government
- 09 Designated as Specialized parts manufacturer by the government
- 12 Received presidential citation for new technology commercialization
- 2008's** 06 Participated in R&D project of SMBA
- 12 Established a R&D center
- 12 Signed the technology transfer contract with a Vietnamese company
- 2010's** 06 Acquired INNO-BIZ(Innovative Business) certificate
- 12 Acquired ISO 14001 certificate

## Rollent's Major Technology



### 3A Unique Carrier Roller

#### **Belt Damage Protection + Triple Housing(Labyrinth type)**

Processing tip of the roller to a round shaped using patented technology to prevent damage to rubber belt, it also provides the best value of T.I.R(Total Indicator Runout) and strong durability.

Triple housing which is the combination of contact and labyrinth sealing types to form a perfect dust-proof and waterproof seal. The triple housing is an epochal improvement for extending the roller's life. It has the functions of accommodating misalignment and assisting in absorbing impact.



### Unique Carrier Roller

#### **Belt Injury Protection + Triple Sealing (Contact Type)**

The round shaped tip of the roller formed by patented technology and the reliable sealing structure is designed by Rollent.

Contact type Sealing structure is one of the features of Rollent's technology. It has triple sealing structure for perfect waterproof and dust-proof and provides lasting durability.

## Exchangeable Rubber Wheel & Disc

### Eco-friendly + Economic

Replacing and improving old rubber segments makes this technology eco-friendly as well as a smart economic technology.

The improved Rubber segment is shaped into a bumpy and inverted triangle to maximize the absorption of impact so that it will extend the life of the rubber belt as well as the rollers.



## Axis-Separated bearing replaceable Lightweight Roller

### Axis-Separable Return Roller

It is designed in order to replace bearing parts for effective maintenance. It also consists of Quill shaft and polypropylene to actualize epochal lightweight in heavy duty return rollers.

Fire-proofing and anti-static are available on request.



## HDPE Roller

### Anti-vibration Cap

HDPE(High Density Polyethylene) roller reduces noise as well as maintenance costs and it provides strong durability and is lightweight and non-corrosive. The Anti-vibration cap application type reduces the noise level dramatically and it provides effective corrosion protection of exposed steel shaft.



## Quality Management

### Quality Management System

We, Daeyang Rollent, have been manufacturing conveyor roller for over 20 years and doing our utmost to satisfy customers' requirements by adhering to total quality management system under our motto "Rollent regards customers' trust as the best asset and value."

We have operated a specialized research laboratory for conveyor roller R&D and quality management under the international criteria of ISO(International Organization for Standardization).

### The Best Quality Product

We have been supplying our products to a variety of companies in worldwide and have good reputations by supplying the highest quality products.

Our major products are certified as NEP(New Excellent Product) from the government and have qualified us from 5 major power companies in which they all belong to KEPCO.

We export our technologies to overseas company on the basis of our own design and production technology.

### Quality Control Standard

Rollent's products are controlled under the restrict quality standard for the best quality and customers' satisfaction. The value of T.I.R(Total Indicator Runout) is under 0.5mm. The waterproof and dust-proof meets the standards with IP45 grade by IEC(International Electrotechnical Commission) 529 regulation.

### Inspection Facilities

- Torque Tester : Rotational Resistance
- Drag Indicator : Total Indicator Runout
- Universal Testing M/C : Tension & Destructive Load
- Dust tester : Dust-proof
- Waterproof Tester : Waterproof
- Durability Tester : Durability



Waterproof



Dust-Proof



Durability

# Major Supply Record

## Domestic

### Cement & Aggregate

Lafarge Halla Cement Co., Ltd.  
 Hyundai Cement Co. Ltd.  
 Hanil Cement Co. Ltd.  
 Korea Cement Co. Ltd.  
 Asia Cement Co. Ltd.  
 Sungshin Cement Co. Ltd.  
 Ssangyong Cement Co. Ltd.  
 Samho Remicon Co. Ltd.  
 Shingonghang Remicon Co. Ltd.  
 Hungjin Remicon Co. Ltd.  
 Kwangyoung Remicon Co. Ltd.

### Thermal Power Plant

Boryung Thermal Plant  
 Dangjin Thermal Plant  
 Youngheung Thermal Plant  
 Hadong Thermal Plant  
 Taean Thermal Plant  
 Samchunpo Thermal Plant  
 Honam Thermal Plant  
 Sochun Thermal Plant  
 Donghae Thermal Plant  
 Yeosu Thermal Plant  
 Youngnam Thermal Plant  
 Youngdong Thermal Plant

### Machinery, Chemistry

Doosan Heavy Industries Co., Ltd.  
 Hanjin Heavy Industries Co., Ltd.  
 Hyundai Heavy Industries Co., Ltd.  
 Daewoo Heavy Industries Co., Ltd.  
 Hyndai Steel Co., Ltd.  
 POSCO Co., Ltd.  
 Namhae Chemical Co., Ltd.  
 Hyundai Petrochemical Co., Ltd.  
 Samlip General Food Co., Ltd.  
 Hyosung Co., Ltd.  
 LG Metal Co., Ltd.  
 KCC Co., Ltd.

## Overseas

Japan  
 Singapore  
 China  
 Malaysia  
 Vietnam  
 Philippines

U.S.A  
 Chile  
 Cyprus  
 Peru  
 Egypt  
 Australia

Indonesia  
 Kuwait  
 Finland  
 Saudi Arabia



Thermal power plant



Under mining



Cement plant



# PRODUCTS ; Conveyor Idlers

## Idlers

### Carrying Idler

- Material transporting section

### Impact Idler

- Material Loading section

### Transition Stand & Idler

- Adjusting angle of the belt

### Self Aligning Carrying Idler

- Preventing the misalignment of the carrying belt

### Self Aligning Return Idler

- Preventing the misalignment of the return belt

### Return Idler

- For supporting the return belt

## Carrier Roller

### 3A Unique Carrier Roller

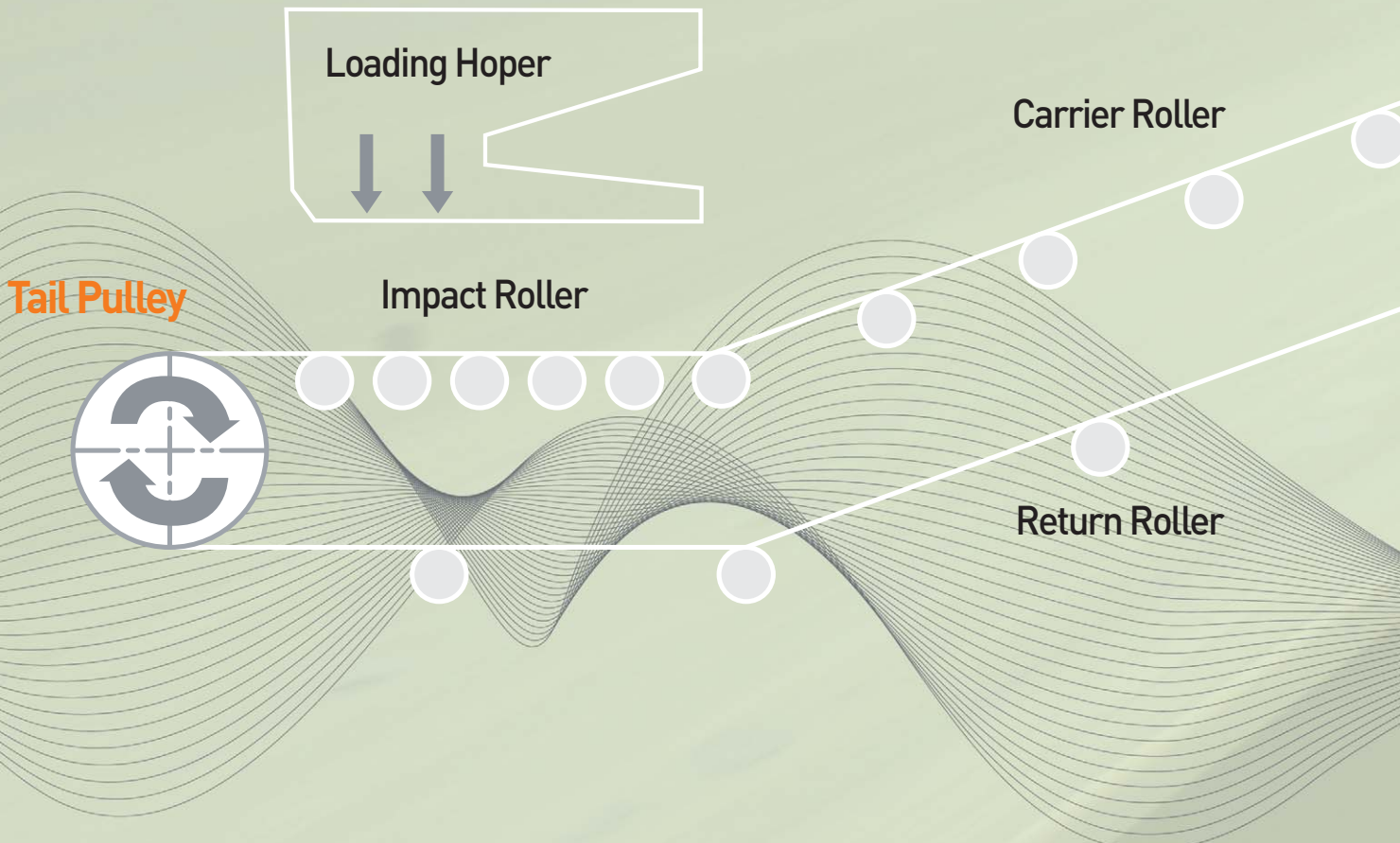
- Belt damage protection
- + Triple housing (Labyrinth)

### Unique Carrier Roller

- Belt damage protection
- + Triple sealing (Contact)

### HDPE Carrier Roller

- Anti-corrosion, Lightweight, Low noise



## Return Roller

### Return Roller (Steel & HDPE)

- Basic type

### Changeable Rubber Disc Return Roller

- Exchangeable Rubber Disc

### Rubber Disc Return Roller

- Coating Type

### Spiral Return Roller

- Cleaning belt and minimizing belt training problems

## Impact Roller

### Exchangeable Impact Roller

- Exchangeable Rubber wheel

### Impact Roller

- Coating Type

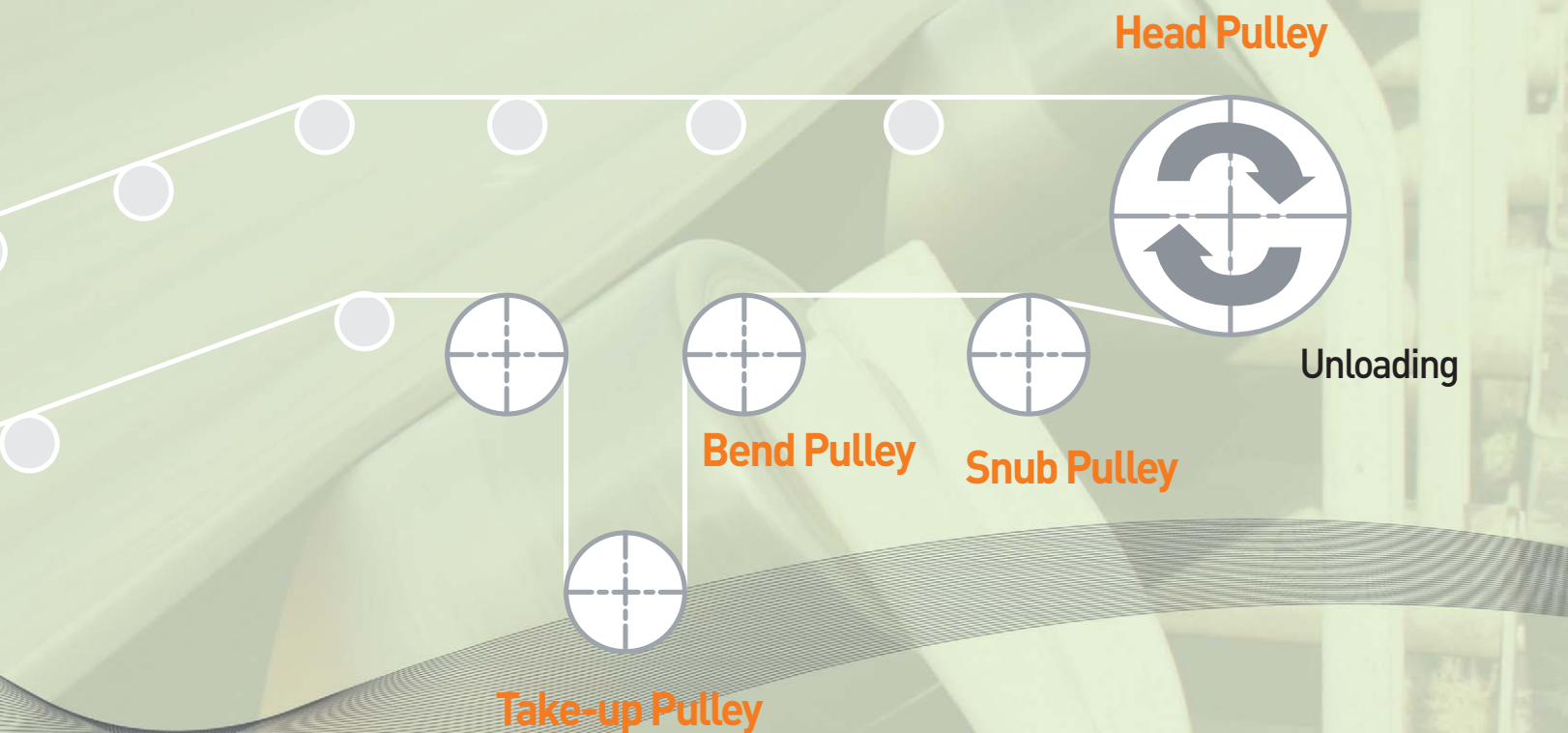
## Pulleys

### Drive Pulley

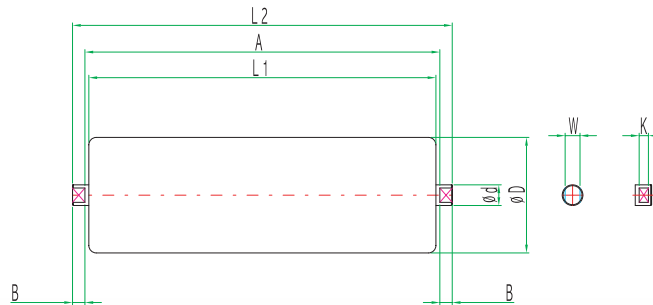
- For operating conveyor belt

### Driven Pulley

- For maintaining tension of conveyor belt and organizing conveyor system



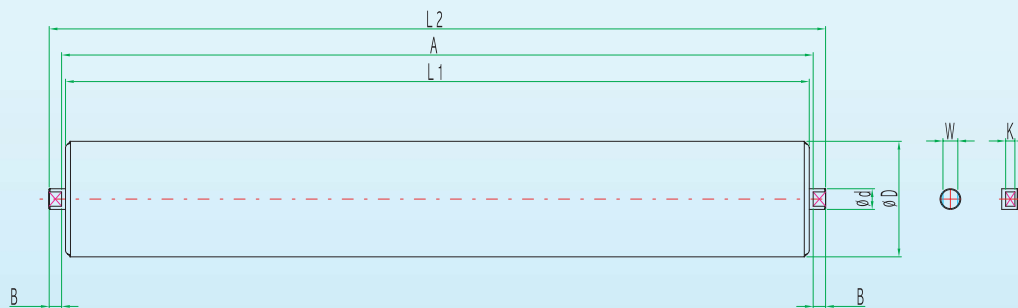
## CARRIER ROLLER



belt width	type	Dimension								bearing No
		ØD	Ød	L1	L2	A	K	B	W	
400	CR-400	89.1		145	175	153				
450	CR-450	101.6		165	195	173				
500	CR-500	108	20	180	210	188				6204zz
600	CR-600	114.3		210	240	218	8	11	14	6304zz
750	CR-750	127		265	295	273				
900	CR-900	127		315	345	323				
1050	CR-1050	127	25	370	410	380				6205zz
1200	CR-1200	133		420	460	430			18	6305zz
1400	CR-1400	139.8	30	500	540	510				6206zz
1600	CR-1600	152		580	620	590	11.2	15	22.4	6306zz
1800	CR-1800	159	35	650	690	660				6207zz
2000	CR-2000	165.2		730	770	740			25	6307zz
2200	CR-2200	178	40	800	840	810				
2400	CR-2400			880	920	890			31	6308zz

※ NOTE : We also supply on the customer's request if the specification is not listed on the above.

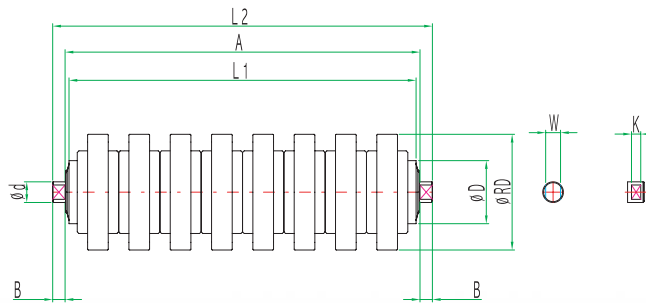
## RETURN ROLLER



belt width	type	Dimension								bearing No
		ØD	Ød	L1	L2	A	K	B	W	
400	RR-400	89.1		460	505	480				
450	RR-450	101.6		510	555	530				
500	RR-500	108	20	560	605	580				6204zz
600	RR-600	114.3		660	705	680	8	11	14	6304zz
750	RR-750	127		850	905	880				
900	RR-900	127		1000	1055	1030				
1050	RR-1050	127	25	1150	1212	1180				6205zz
1200	RR-1200	133		1300	1362	1330			18	6305zz
1400	RR-1400	139.8	30	1510	1585	1550				6206zz
1600	RR-1600	152		1710	1785	1750	11.2	15	22.4	6306zz
1800	RR-1800	159	35	2000	2075	2040				6207zz
2000	RR-2000	165.2		2200	2275	2240			25	6307zz
2200	RR-2200	178	40	2400	2475	2440				
2400	RR-2400			2600	2675	2640			31	6308zz

※ NOTE : We also supply on the customer's request if the specification is not listed on the above.

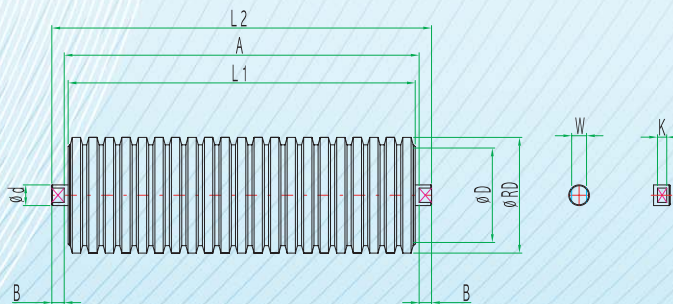
EXCHANGEABLE IMPACT ROLLER



belt width	type	Dimension								bearing No		
		ØRD	ØD	Ød	L1	L2	A	K	B		W	
400	NIR-400	90			145	175	153					
450	NIR-450	102	60.5		165	195	173					
500	NIR-500	108		20	180	210	188					6204zz
600	NIR-600	115	76.3		210	240	218	8	11	14		6304zz
750	NIR-750	127			265	295	273					
900	NIR-900	127			315	345	323					
1050	NIR-1050	127		25	370	410	380				18	6205zz
1200	NIR-1200	133	60.5		420	460	430					6305zz
1400	NIR-1400	140	76.3	30	500	540	510				22.4	6206zz
1600	NIR-1600	152			580	620	590	11.2	15			6306zz
1800	NIR-1800	159	89.1	35	650	690	660				25	6207zz
2000	NIR-2000	166			730	770	740					6307zz
2200	NIR-2200	178	101.6		800	840	810					
2400	NIR-2400	178		40	880	920	890				31	6308zz

※ NOTE : We also supply on the customer's request if the specification is not listed on the above.

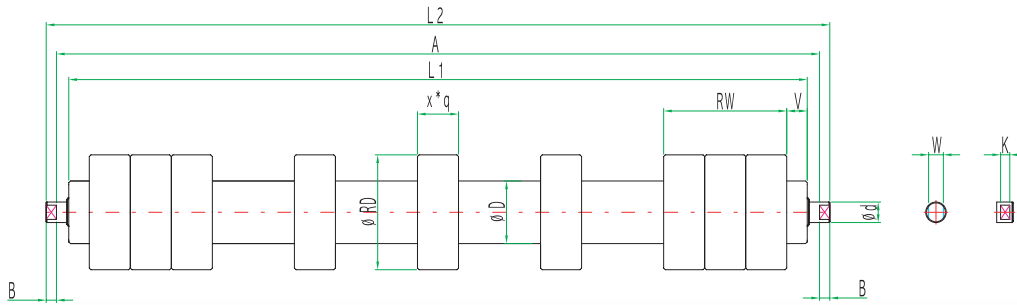
IMPACT ROLLER



belt width	type	Dimension								bearing No		
		ØRD	ØD	Ød	L1	L2	A	K	B		W	
400	IR-400	90	60.5		145	175	153					
450	IR-450	102	76.3		165	195	173					
500	IR-500	108		20	180	210	188					6204zz
600	IR-600	115	89.1		210	240	218	8	11	14		6304zz
750	IR-750	127			265	295	273					
900	IR-900	127	101.6		315	345	323					
1050	IR-1050	127		25	370	410	380				18	6205zz
1200	IR-1200	133	101.6		420	460	430					6305zz
1400	IR-1400	140	114.3	30	500	540	510				22.4	6206zz
1600	IR-1600	152	127		580	620	590	11.2	15			6306zz
1800	IR-1800	159	139.8	35	650	690	660				25	6207zz
2000	IR-2000	166			730	770	740					6307zz
2200	IR-2200	178	152		800	840	810					
2400	IR-2400	178		40	880	920	890				31	6308zz

※ NOTE : We also supply on the customer's request if the specification is not listed on the above.

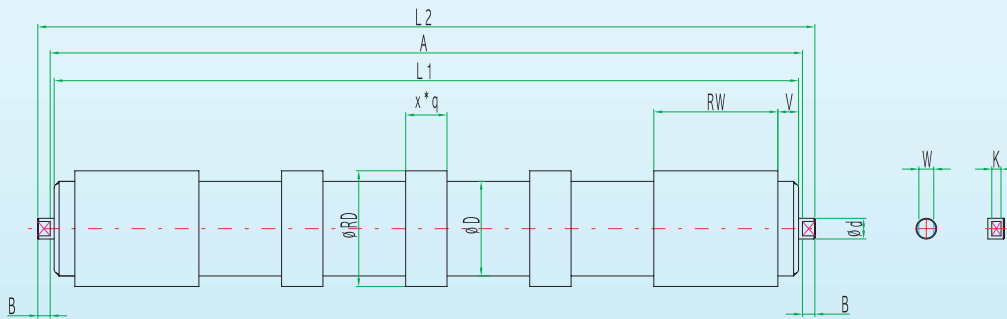
## EXCHANGEABLE RUBBER DISC RETURN ROLLER



belt width	type	Dimension											bearing No				
		ØRD	ØD	Ød	L1	L2	A	K	B	W	V	RW		x*q			
400	NRD-400	90			460	505	480										
450	NRD-450	102	60.5		510	555	530										
500	NRD-500	108		20	560	605	580	8	11								6204zz
600	NRD-600	115	76.3		660	705	680			14							6304zz
750	NRD-750	127			850	905	880										
900	NRD-900	127			1000	1055	1030										
1050	NRD-1050	127		25	1150	1212	1180										6205zz
1200	NRD-1200	133	60.5		1300	1362	1330				18						6305zz
1400	NRD-1400	140		30	1510	1585	1550										6206zz
1600	NRD-1600	152	76.3		1710	1785	1750	11.2	15								6306zz
1800	NRD-1800	159	89.1	35	2000	2075	2040										6207zz
2000	NRD-2000	166			2200	2275	2240				25						6307zz
2200	NRD-2200	178	101.6		2400	2475	2440										
2400	NRD-2400	178		40	2600	2675	2640				31						6308zz

※ NOTE : We also supply on the customer's request if the specification is not listed on the above.

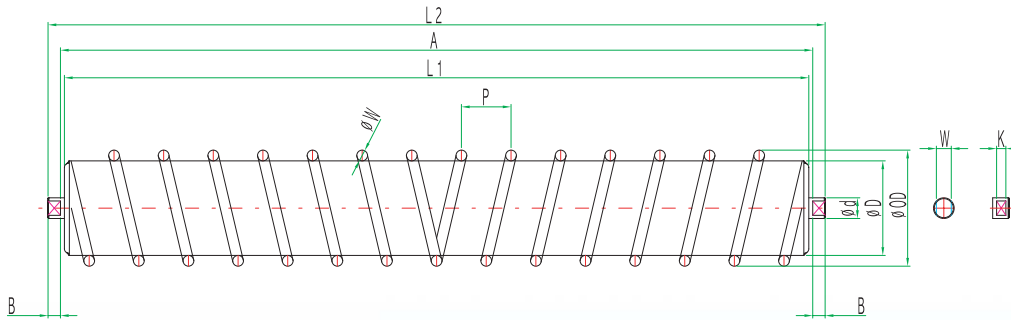
## RUBBER DISC RETURN ROLLER



belt width	type	Dimension											bearing No				
		ØRD	ØD	Ød	L1	L2	A	K	B	W	V	RW		x*q			
400	RDR-400	90			460	505	480										
450	RDR-450	102	60.5		510	555	530										
500	RDR-500	108	76.3	20	560	605	580	8	11								6204zz
600	RDR-600	115	89.1		660	705	680			14							6304zz
750	RDR-750	127			850	905	880										
900	RDR-900	127			1000	1055	1030										
1050	RDR-1050	127		25	1150	1212	1180										6205zz
1200	RDR-1200	133	60.5		1300	1362	1330				18						6305zz
1400	RDR-1400	140		30	1510	1585	1550										6206zz
1600	RDR-1600	152	76.3		1710	1785	1750	11.2	15								6306zz
1800	RDR-1800	159	89.1	35	2000	2075	2040										6207zz
2000	RDR-2000	166			2200	2275	2240				25						6307zz
2200	RDR-2200	178	101.6		2400	2475	2440										
2400	RDR-2400	178		40	2600	2675	2640				31						6308zz

※ NOTE : We also supply on the customer's request if the specification is not listed on the above.

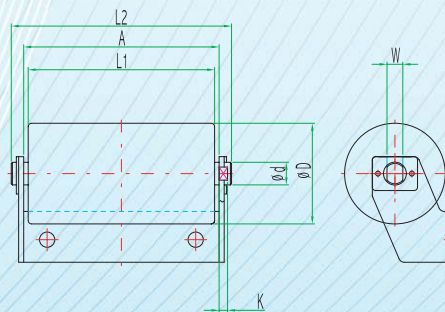
SPIRAL RETURN ROLLER



belt width	type	Dimension										bearing No			
		∅ OD	∅ D	∅ d	L1	L2	A	K	B	W	∅ W		P		
400	SPR-400				460	505	480								
450	SPR-450	90	76.3		510	555	530								
500	SPR-500				560	605	580								6204zz
600	SPR-600	114	89.1	20	660	705	680	8	11	14					6304zz
750	SPR-750				850	905	880								
900	SPR-900	127	101.6		1000	1055	1030								
1050	SPR-1050				1150	1212	1180								6205zz
1200	SPR-1200	139	114.3		1300	1362	1330								6305zz
1400	SPR-1400				1510	1585	1550								6206zz
1600	SPR-1600	152	127	30	1710	1785	1750	11.2	15	22.4	13				6306zz
1800	SPR-1800	166	139.8		2000	2075	2040								6207zz
2000	SPR-2000				2200	2275	2240								6307zz
2200	SPR-2200	178	152		2400	2475	2440								
2400	SPR-2400			40	2600	2675	2640								6308zz

※ NOTE : We also supply on the customer's request if the specification is not listed on the above.

PIPE CONVEYOR ROLLER

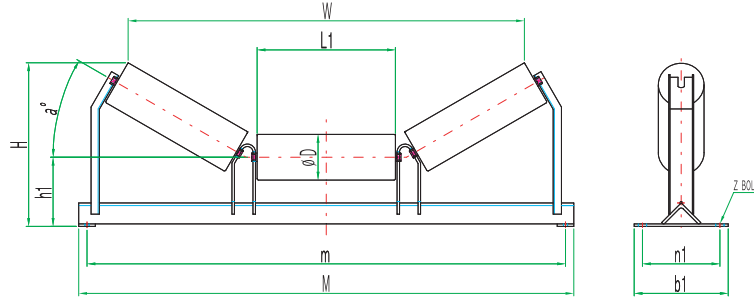


belt width	type	Dimension							bearing No
		∅ D	∅ d	L1	L2	A	K	W	
150	PCR-150	60.5		98	120	105			
200	PCR-200			128	150	135			
250	PCR-250	76.3	20	165	195	173	8	14	6204zz
300	PCR-300	89.1		180	210	188			6304zz
350	PCR-350	101.6		210	240	218			
400	PCR-400	114.3		265	295	273			
500	PCR-500	127		315	345	323			
600	PCR-600	139.8	25	370	410	380	11.2	18	6205zz
700	PCR-700	152		420	460	430			6305zz
850	PCR-850	165		500	540	510			

※ NOTE : We also supply on the customer's request if the specification is not listed on the above.

# PRODUCTS ; Conveyor Idlers

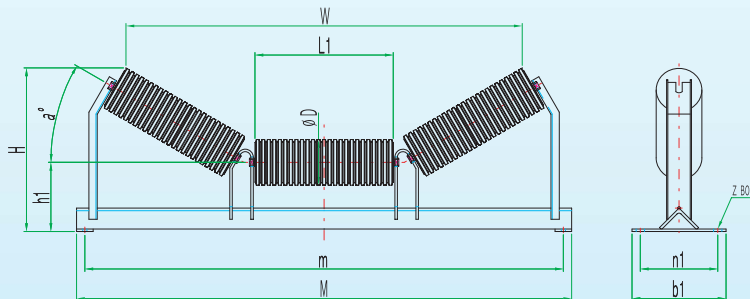
## CARRYING IDLER



belt width	ØD	L1	M	m	h1	n1	b1	Dimension						Z	Angle	Weight (Kg)	
								H			W						
								20°	30°	45°	20°	30°	45°				
400		145	690	640				225	235	275	470	435	365			11.4	
450	89.1	165	740	690	125	140	200	230	245	290	525	490	415	M12	L50×T6	12.1	
500		180	790	740				235	250	300	570	535	450			12.7	
600		210	890	840	140			260	280	340	660	615	530			L65×T6	15.6
750	114.3	265	1090	1040	150	160	220	300	325	395	810	750	645	M12	L75×T6	21.3	
900		315	1240	1190					320	345	430	950	890		765		24.2
1050	139.8	370	1390	1340	180	180	240	385	411	515	1140	1055	910	M12	L90×T7	33.8	
1200		420	1540	1490					400	435	550	1280	1195		1030		42.2
1400	165.2	500	1790	1730	250	280	340	510	550	690	1515	1435	1235	M16	L100×T10	66.0	
1600		580	1990	1930					540	585	750	1745	1650		1430		82.1
1800		650	2280	2220				280	590	645	830	1950	1825		1605	M16	L130×T9
2000	730	2480	2420		620	680	885	2180	2040	1800		113.0					
2200	165.2	800	2680	2620	300	330	390	665	730	955	2380	2235	1970	M20	L130×T12	143.5	
2400		880	2880	2820					690	760	1015	2615	2450		2160		163.7

※ NOTE : We also supply on the customer's request if the specification is not listed on the above.

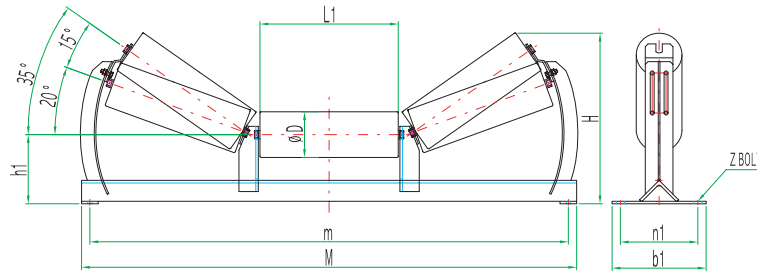
## IMPACT IDLER



belt width	ØD	L1	M	m	h1	n1	b1	Dimension						Z	Angle	Weight (Kg)	
								H			W						
								20°	30°	45°	20°	30°	45°				
400		145	690	640				225	235	275	470	435	365			11.9	
450	90	165	740	690	125	140	200	230	245	290	525	490	415	M12	L50×T6	12.8	
500		180	790	740				235	250	300	570	535	450			13.5	
600		210	890	840	140			260	280	340	660	615	530			L65×T6	16.6
750	115	265	1090	1040	150	160	220	300	325	395	810	750	645	M12	L75×T6	22.6	
900		315	1240	1190					320	345	430	950	890		765		26.2
1050	140	370	1390	1340	180	180	240	385	411	515	1140	1055	910	M12	L90×T7	36.3	
1200		420	1540	1490					400	435	550	1280	1195		1030		47.6
1400	166	500	1790	1730	250	280	340	510	550	690	1515	1435	1235	M16	L100×T10	72.4	
1600		580	1990	1930					540	585	750	1745	1650		1430		93.5
1800		650	2280	2220				280	590	645	830	1950	1825		1605	M16	L130×T9
2000	730	2480	2420		620	680	885	2180	2040	1800		128.4					
2200	166	800	2680	2620	300	330	390	665	730	955	2380	2235	1970	M20	L130×T12	161.0	
2400		880	2880	2820					690	760	1015	2615	2450		2160		183.0

※ NOTE : We also supply on the customer's request if the specification is not listed on the above.

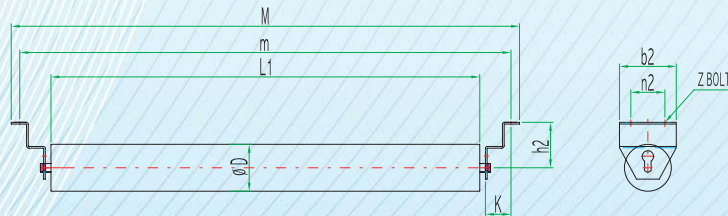
TRANSITION IDLER



belt width	Dimension											Weight (Kg)
	ØD	L1	M	m	h1	n1	b1	H		Z	Angle	
								5-20°	20-35°			
400	89.1	145	690	640	125	140	200	225	275	M12	L50×T6	14.2
450		165	740	690				230	290			15.1
500		180	790	740				235	300			15.8
600	114.3	210	890	840	140	160	220	260	340	M12	L65×T6	18.8
750		265	1090	1040	300			395	25.0			
900		315	1240	1190	320			430	28.7			
1050	139.8	370	1390	1340	180	180	240	385	515	M12	L90×T7	39.2
1200		420	1540	1490	400			550	50.4			
1400		500	1790	1730	510			690	75.5			
1600	165.2	580	1990	1930	250	280	340	540	750	M16	L100×T10	97.2
1800		650	2280	2220	590			830	117.2			
2000		730	2480	2420	620			885	132.4			
2200	165.2	800	2680	2620	300	330	390	665	955	M20	L130×T12	165.5
2400		880	2880	2820	690			1015	187.8			

※ NOTE : We also supply on the customer's request if the specification is not listed on the above.

RETURN IDLER

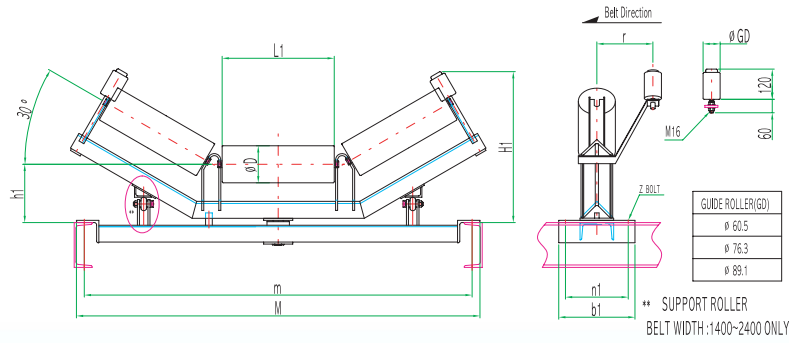


belt width	Dimension										Weight (Kg)
	ØD	L1	M	m	h2	n2	b2	K	Z		
400	89.1	460	690	640	110	60	120	80	M12	6.2	
450		510	740	690						6.5	
500		560	790	740						6.9	
600	114.3	660	890	840	130	100	170	90	M12	7.6	
750		850	1090	1040						12.1	
900		1000	1240	1190						13.6	
1050	139.8	1150	1390	1340	160	120	200	90	M16	21.3	
1200		1300	1540	1490						23.3	
1400		1510	1790	1730						33.6	
1600	165.2	1710	1990	1930	390	150	250	M20	37.0		
1800		2000	2280	2220					46.8		
2000		2200	2480	2420					50.6		
2200	165.2	2400	2680	2620	390	150	250	M20	66.0		
2400		2600	2880	2820					70.3		

※ NOTE : We also supply on the customer's request if the specification is not listed on the above.



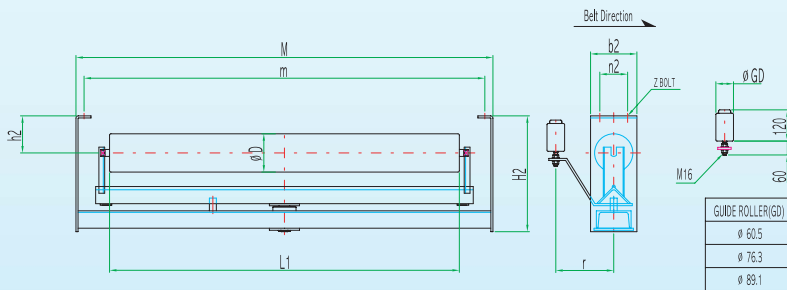
## SELF-ALIGNING CARRYING IDLER



belt width	Dimension										Weight (Kg)
	ØD	L1	M	m	H1 30°	h1	n1	b1	r	Z	
400	89.1	145	690	640	333	135	140	200	150	M12	21.1
450		165	740	690	343						22.5
500		180	790	740	351						23.6
600		210	890	840	381						28.7
750		265	1090	1040	441						34.7
900	114.3	315	1240	1190	466	160	160	220	180	M16	38.7
1050		370	1390	1340	536	190	180	240			55.5
1200		420	1540	1490	561	260	280	340			65.6
1400	165.2	500	1790	1730	686	290	330	390	250	M16	102.5
1600		580	1990	1930	729						123.2
1800		650	2280	2220	793						140.5
2000		730	2480	2420	833						157.6
2200		800	2680	2620	888						207.9
2400		880	2880	2820	928						237.5

※ NOTE : We also supply on the customer's request if the specification is not listed on the above.

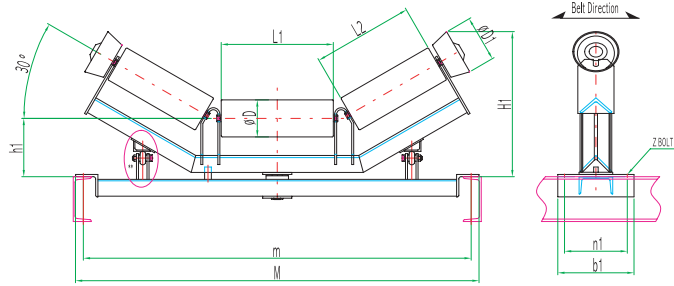
## SELF-ALIGNING RETURN IDLER



belt width	Dimension										Weight (Kg)	
	ØD	L1	M	m	H2	h2	n2	b2	r	Z		
400	89.1	460	690	640	310	135	60	130	150	M12	21.5	
450		510	740	690							24.2	
500		560	790	740							26.4	
600		660	890	840							28.7	
750		850	1090	1040							36.5	
900	114.3	1000	1240	1190	327	160	100	150	180	M16	42.6	
1050		1150	1390	1340	390	190					150	58.7
1200		1300	1540	1490	426	260					220	66.3
1400	165.2	1510	1790	1730	520	290	120	250	250	M16	96.5	
1600		1710	1990	1930	109.8							
1800		2000	2280	2220	144.8							
2000		2200	2480	2420	154.5							
2200		2400	2680	2620	160.5							
2400		2600	2880	2820	174.8							

※ NOTE : We also supply on the customer's request if the specification is not listed on the above.

SELF-ALIGNING CARRYING IDLER

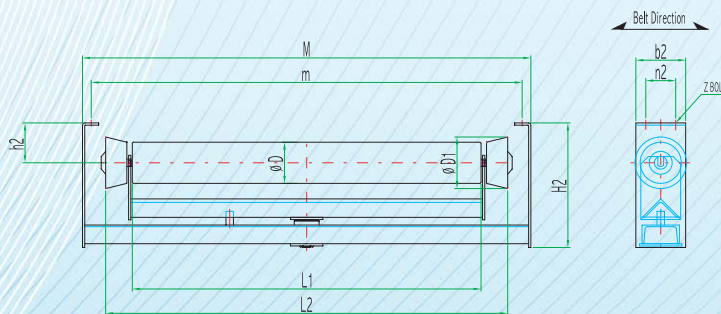


\*\* SUPPORT ROLLER  
BELT WIDTH :1400-2400 ONLY

belt width	Dimension											Weight (Kg)	
	∅D	∅D1	L1	L2	M	m	H1 30°	h1	n1	b1	Z		
400			145	110	690	640	290						22.1
450	89.1	126	165	125	740	690	300	135	140	200	M12	23.5	
500			180	140	790	740	310					24.6	
600			210	170	890	840	335					150	150
750	114.3	152	265	220	1090	1040	390	160	160	220	M16	35.5	
900			315	275	1240	1190	415					39.5	
1050			370	345	1390	1340	500					190	180
1200	139.8	180	420	380	1540	1490	515	260	280	340	M16	66.3	
1400			500	450	1790	1730	635					103.1	
1600			580	515	1990	1930	670					124.2	
1800	165.2	205	650	575	2280	2220	730	290	330	390	M20	141.3	
2000			730	640	2480	2420	760					158.1	
2200			800	710	2680	2620	820					208.3	
2400			880	790	2880	2820	890	310				238.7	

※ NOTE : We also supply on the customer's request if the specification is not listed on the above.

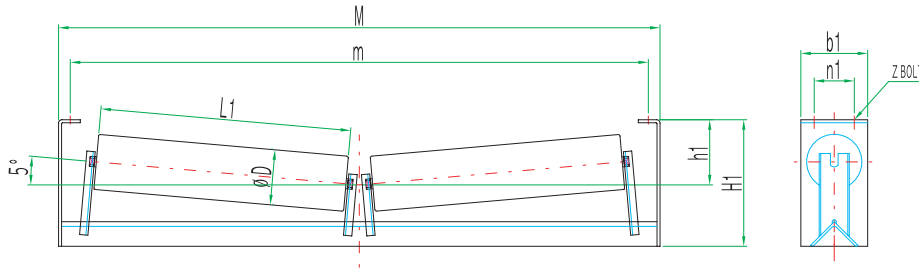
SELF-ALIGNING RETURN IDLER



belt width	Dimension											Weight (Kg)	
	∅D	∅D1	L1	L2	M	m	H2	h2	n2	b2	Z		
400			400	565	690	640							16.1
450	89.1	126	450	615	740	690	310	135	60	130	M12	17.1	
500			500	665	790	740						18.0	
600			600	765	890	840						320	150
750	114.3	152	750	915	1090	1040	327	160	100	150	M16	28.0	
900			900	1065	1240	1190						29.8	
1050			1050	1240	1390	1340						390	190
1200	139.8	180	1200	1390	1540	1490	520	260	120	220	M16	49.3	
1400			1400	1610	1790	1730						74.1	
1600			1600	1810	1990	1930						90.5	
1800	165.2	205	1800	2010	2280	2220	522	290	150	250	M20	110.7	
2000			2000	2210	2480	2420	542					124.0	
2200			2200	2410	2680	2620	620					310	156.1
2400			2400	2610	2880	2820	620	310				176.1	

※ NOTE : We also supply on the customer's request if the specification is not listed on the above.

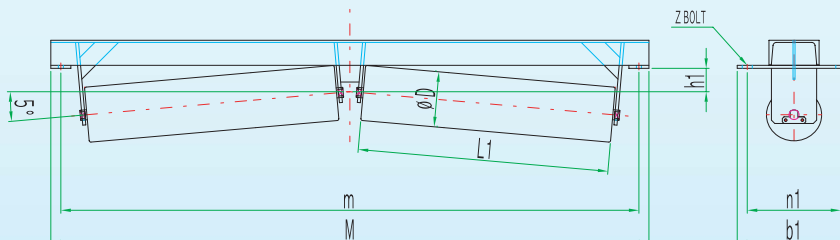
## V RETURN IDLER



belt width	Dimension										Weight (Kg)
	ØD	L1	M	m	H1	h1	n1	b1	Z	Angle	
400	89.1	220	690	640	310	120	60	120	M12	L50 × T6	12.5
450		245	740	690		123					13.3
500		270	790	740		124					14.1
600		320	890	840		126					15.8
750		425	1090	1040		131					24.1
900	114.3	490	1240	1190	327	134	100	170	M16	L75 × T6	27.3
1050	565	1390	1340	157	41.1						
1200	640	1540	1490	161	45.1						
1400	750	1790	1730	195	77.7						
1600	850	1990	1930	201	85.9						
1800	165.2	980	2280	2220	522	205	120	200	M16	L100 × T10	119.3
2000		1080	2480	2420	542	129.1					
2200		1180	2680	2620	620	159.1					
2400		1280	2880	2820	220	173.5					

※ NOTE : We also supply on the customer's request if the specification is not listed on the above.

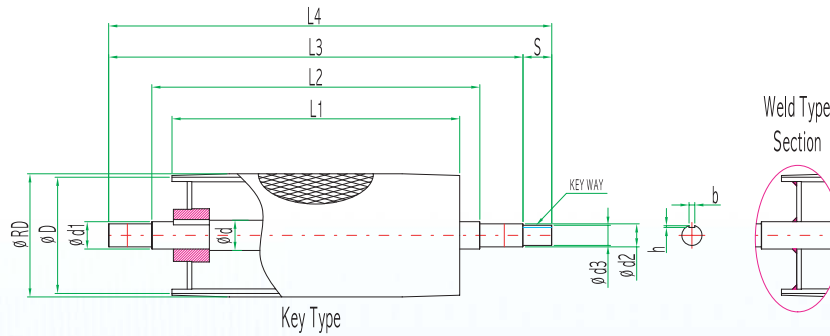
## INVERTED V RETURN IDLER



belt width	Dimension										Weight (Kg)
	ØD	L1	M	m	h1	n1	b1	Z	Channel		
400	89.1	220	690	640	50	140	200	M12	C 75 × 40	12.7	
450		245	740	690						13.6	
500		270	790	740						14.4	
600		320	890	840						16.8	
750		425	1090	1040						28.3	
900	114.3	490	1240	1190	32.2	180	240	M16	C 100 × 50	41.5	
1050	565	1390	1340	46.3							
1200	640	1540	1490	60	46.3						
1400	750	1790	1730	280	83.0						
1600	850	1990	1930	340	92.5						
1800	165.2	980	2280	2220	70	330	390	M16	C 125 × 65	111.8	
2000		1080	2480	2420						121.8	
2200		1180	2680	2620						157.7	
2400		1280	2880	2820						172.1	

※ NOTE : We also supply on the customer's request if the specification is not listed on the above.

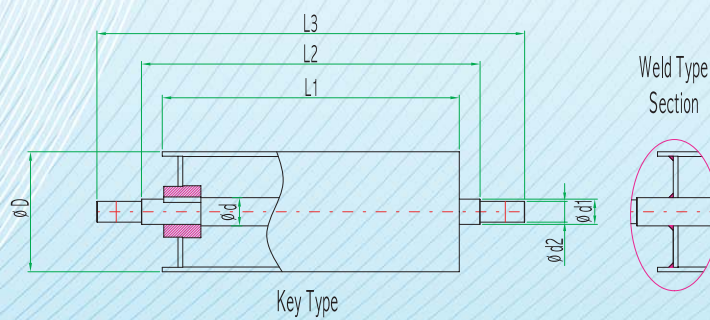
## DRIVE PULLEY



belt width	type		Dimension												
			ØRD	ØD	Ød	Ød1	Ød2	Ød3	L1	L2	L3	L4	S	b	h
600	KEY	DPK-600	240	216	65	60	55	50	660	780	1000	1100	100	14	5.5
	WELD	DPW-600			60	*									
750	KEY	DPK-750	342	318	85	80	75	70	850	950	1200	1300	100	20	7.5
	WELD	DPW-750			80	*									
900	KEY	DPK-900	430	406	95	90	85	80	1000	1100	1350	1450	100	22	9
	WELD	DPW-900			90	*									

※ NOTE : We also supply on the customer's request if the specification is not listed on the above.

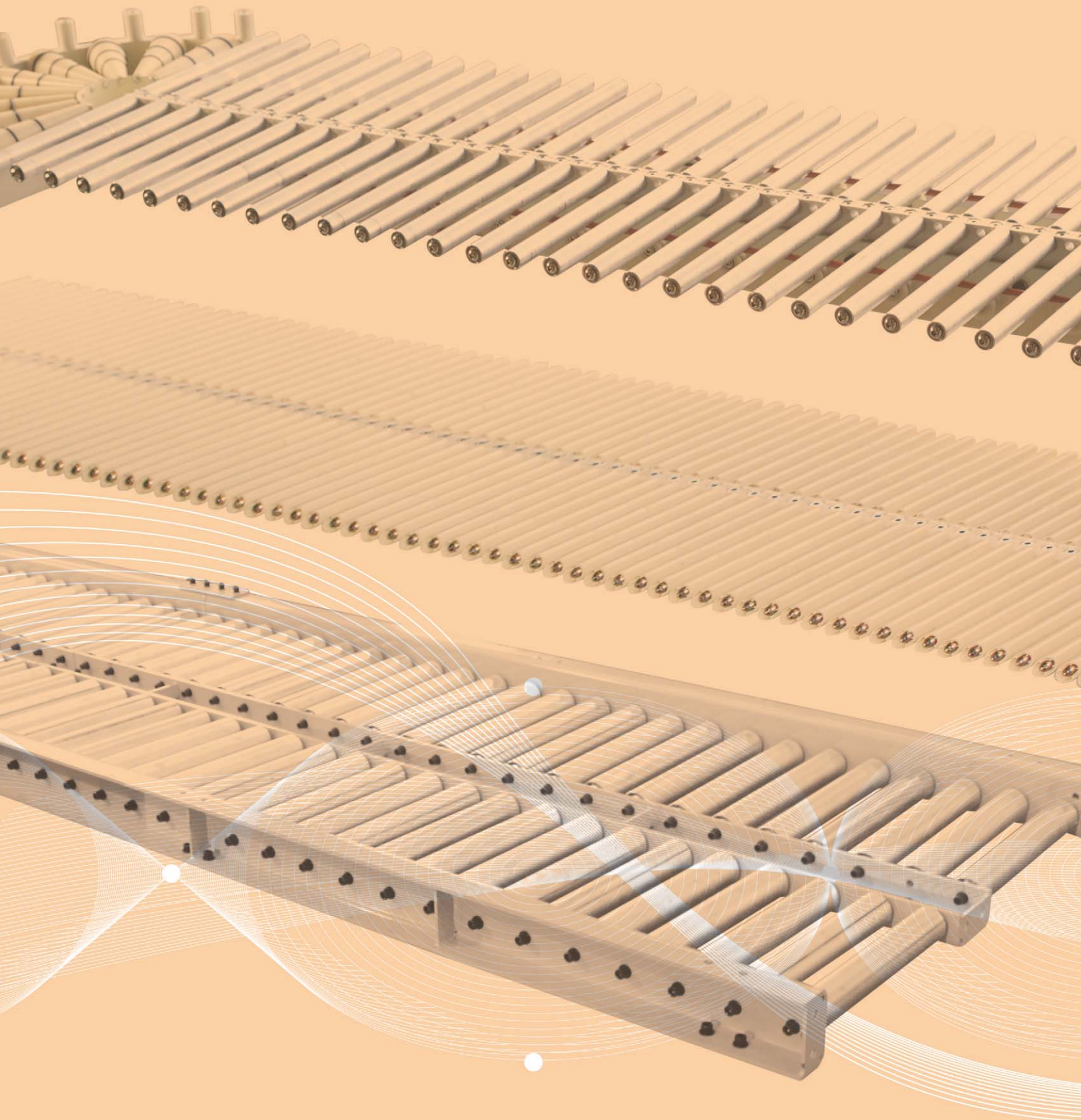
## DRIVEN PULLEY



belt width	type		Dimension						
			ØD	Ød	Ød1	Ød2	L1	L2	L3
600	KEY	DPK-600	216	55	50	45	660	780	1000
	WELD	DPW-600		50	*				
750	KEY	DPK-750	318	75	70	65	850	950	1200
	WELD	DPW-750		70	*				
900	KEY	DPK-900	406	85	80	75	1000	1100	1350
	WELD	DPW-900		80	*				

※ NOTE : We also supply on the customer's request if the specification is not listed on the above.

# PRODUCTS ; Conveyor Rollers



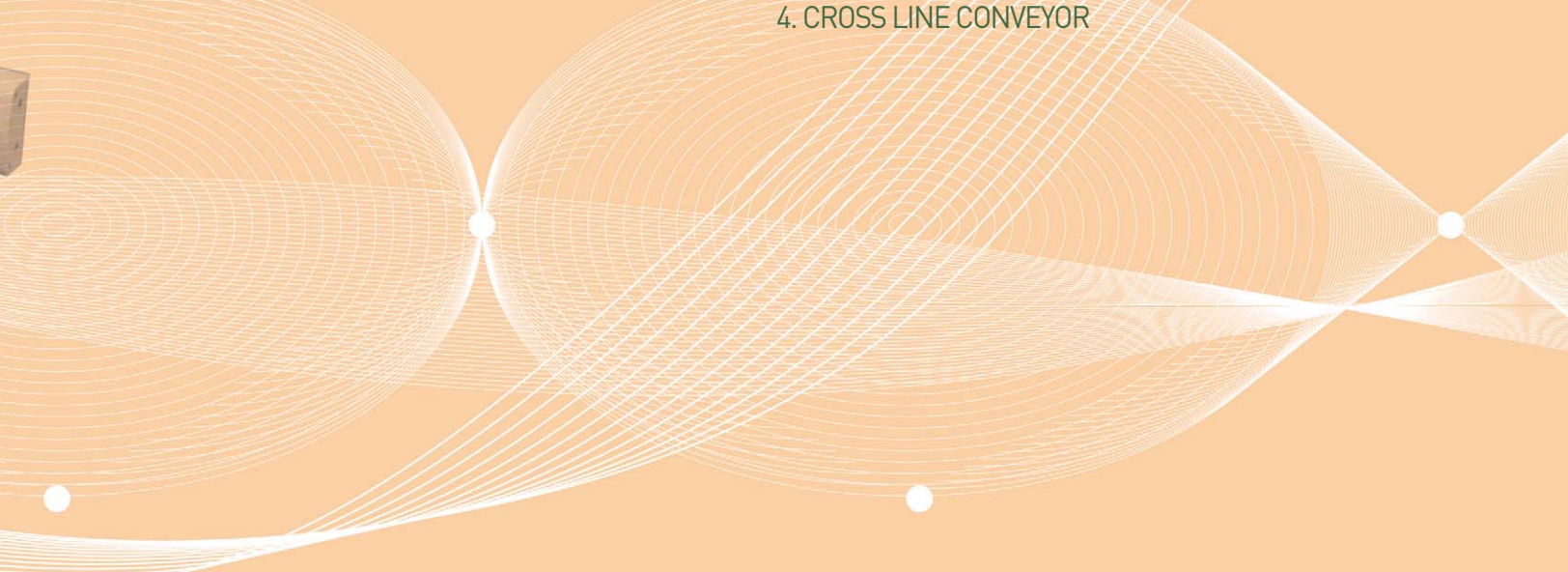
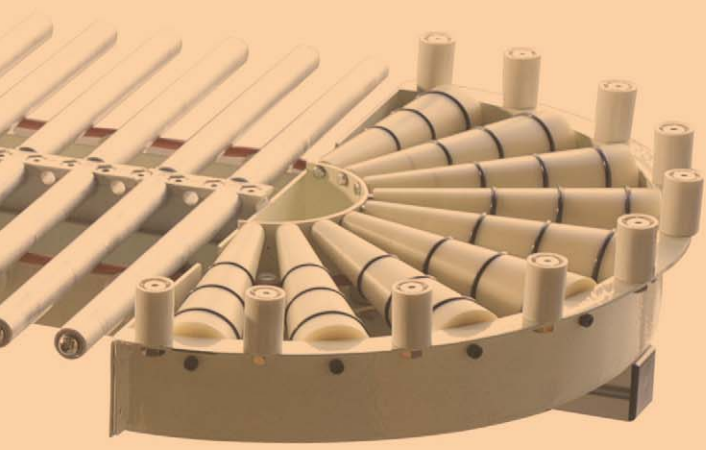
## Products ; Conveyor Rollers

### Rollers

1. PH ROLLER
2. PH-PLASTIC ROLLER
3. MR ROLLER
4. BALL BEARING ROLLER
5. RING BELT ROLLER
6. DRIVE ROLLER
7. ACCUMULATION ROLLER
8. TAPER ROLLER

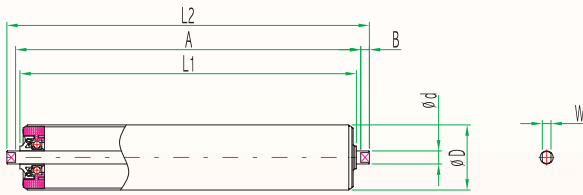
### Conveyor Rollers

1. CONVEYOR
2. FREE ROLLER CONVEYOR
3. ONE WAY ROUND CONVEYOR
4. CROSS LINE CONVEYOR

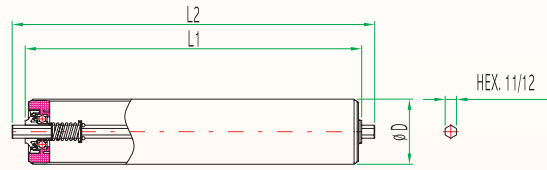


## PH ROLLER

Roller using the high strength plastic housing.



**PH-R(STD)**  
Basic type.

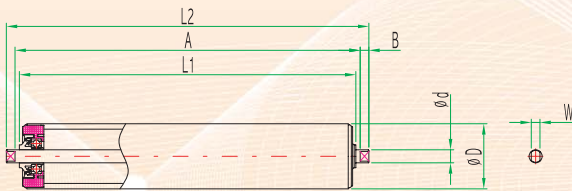


**PH-R(S)**  
Spring-containing swift type.

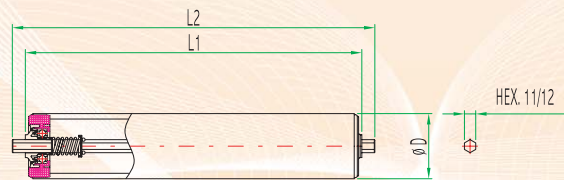
Type	Dimension Table							Bearing No.
	ØD	Ød	L1	L2	A	B	w	
PH-R(STD)	38. 42.	12 15	400	420	404	8	8	6002zz
PH-R(S)	48. 50. 60	HEX 11/12					430	

## PH-PLASTIC ROLLER

Plastic roller using the high strength plastic housing



**PH/P-R(STD)**  
Basic type.

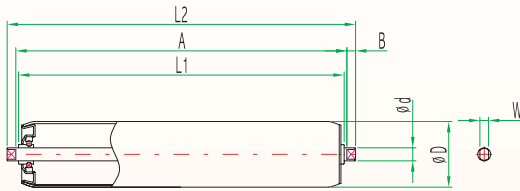


**PH/P-R(S)**  
Spring-containing swift type.

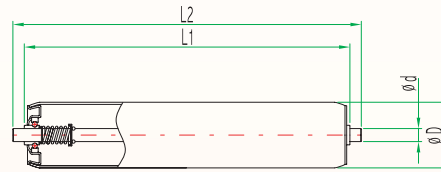
Type	Dimension Table							Bearing No.
	ØD	Ød	L1	L2	A	B	w	
PH/P-R(STD)	38 48	12 15	400	420	404	8	8	6002zz
PH/P-R(S)	60	HEX 11/12					430	

MR ROLLER

Roller using MR bearing.



**MR-R(STD)**  
Basic type.

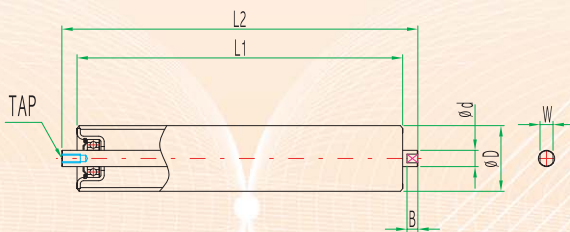


**MR-R(S)**  
Spring-containing swift type.

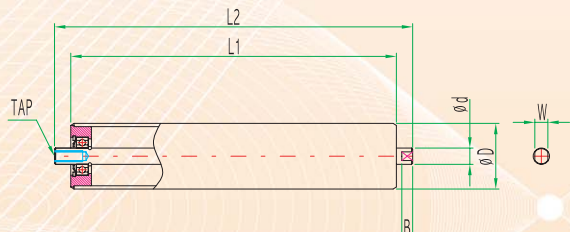
Type	Dimension Table							Bearing No.
	ØD	Ød	L1	L2	A	B	w	
<b>MR-R(STD)</b>	34. 42	12	400	420	404	8	8	6201MR
		15					12	6202MR
<b>MR-R(S)</b>	48. 50. 60	12		430	*	*	*	6201MR

BALL BEARING ROLLER

Roller using ball bearing.



**BB-R(STD)**  
Basic type.



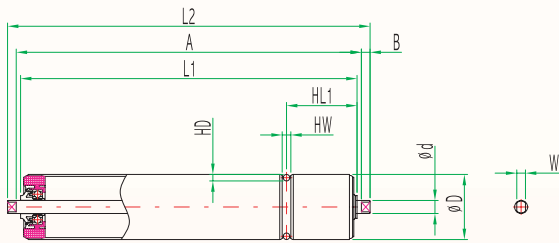
**BB-R(SH)**  
Detail housing type.

Type	Dimension Table							Bearing No.
	ØD	Ød	L1	L2	A	B	w	
<b>BB-R(STD)</b>	48	12	400	420	410	8	8	6201zz
		15					12	6202zz
		12					8	6201zz
<b>BB-R(SH)</b>	60	15					12	6202zz
		17					14	6203zz

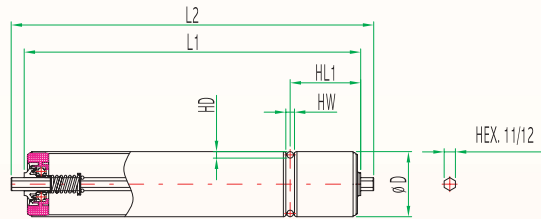


## RING BELT ROLLER

### Roller using for ring belt conveyor



**PH/RB-R(STD)**  
Basic type.

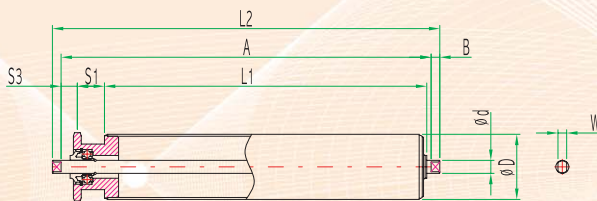


**PH/RB-R(PHS)**  
Spring-containing swift type.

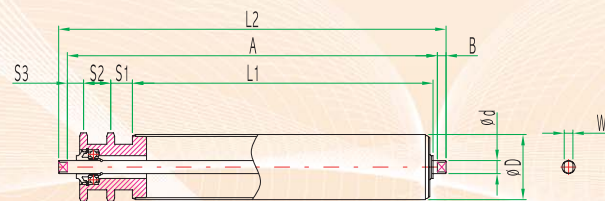
Type	Dimension Table										Bearing No.
	ØD	Ød	L1	L2	A	B	w	HL1	HW	HD	
PH/RB-R(STD)	38. 42	12	400	420	404	8	8	65	8/12	6	6002zz
	48. 50. 60	15									
PH/RB-R(S)		HEX 11/12		430	*	*	*				

## DRIVE (SPROCKET) ROLLER

### Chain drive roller



**DR-R(STD) S**  
Basic type of single chain.

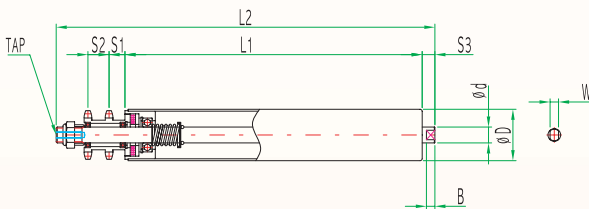


**DR-R(STD) D**  
Basic type of double chain.

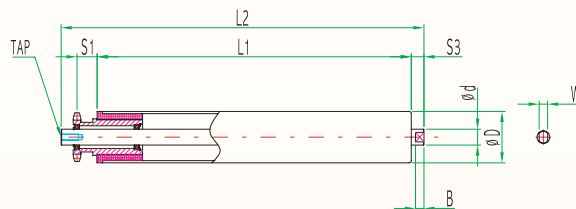
Type	Dimension Table											Bearing No.
	ØD	Ød	L1	L2	A	w	S1	S2	S3	T	RS#	
DR-R(STD) S	42. 48	12	400	454	438	8	25	*	9	7.2	40	6002zz
	50. 60	15										
DR-R(STD) D				474	458			20				

ACCUMULATION ROLLER

Roller of automation line for the transport and accumulation of freights



**AC-R(IN S/P)**  
Inside spring-containing type.

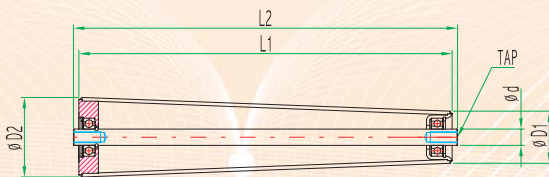


**AC-R(SAT)**  
Self-adjusting torque type.

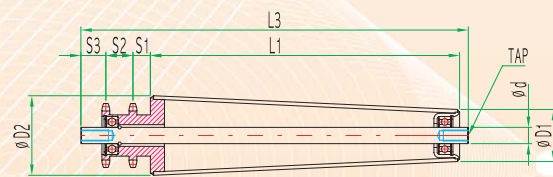
Type	Dimension Table											Bearing No.	
	ØD	Ød	L1	L2	W	S1	S2	S3	T	RS#			
AC-R(IN S/P)	SINGLE						*						
	DOUBLE	42. 48	12	400	501	8	20	25	9	7.2	40	6002zz	
AC-R(SAT)	SINGLE	50. 60	15		448		*						
	DOUBLE				468		20						

TAPER ROLLER

Roller using for curved section of conveyor



**TP-R(TAP)**  
Basic type.

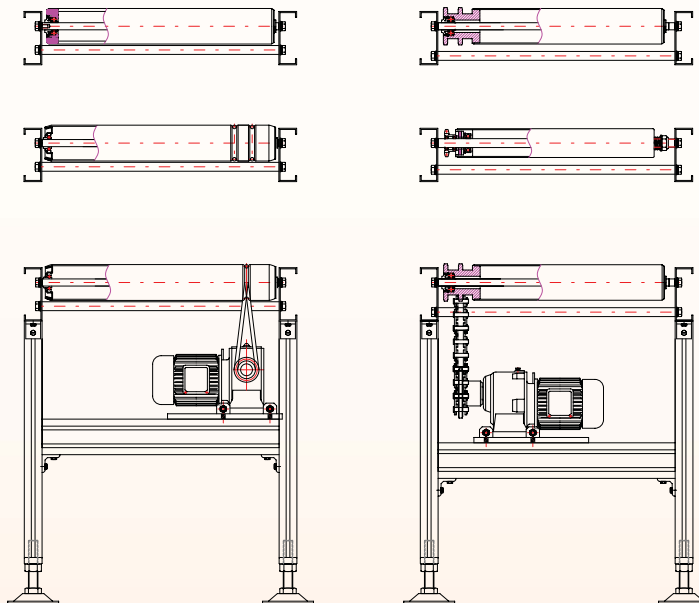


**DP/TP-R(TAP)D**  
Double-sprocket taper type.

Type	Dimension Table											Bearing No.
	ØD2	ØD1	Ød	L1	L2	L3	S1	S2	S3	T	RS#	
TP-R(TAP)		48										
	60	50	12		420	*	*	*	*	*	*	
	70	60	15	400								6002zz
DR/TP-R(TAP)D		48										
	60	50	12		*	459	20	25	9	7.2	40	
	70	60	15									

## CONVEYOR

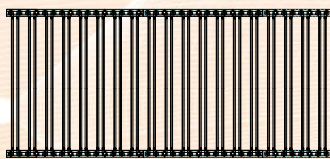
Daeyang Rollent's roller conveyors are clean in appearance and easy to assemble as it uses frames of minutely processed zinc plates and can use various types of rollers suitable for installation needs.



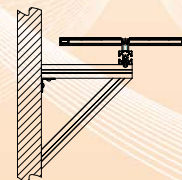
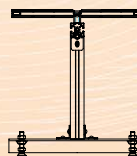
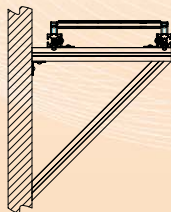
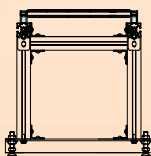
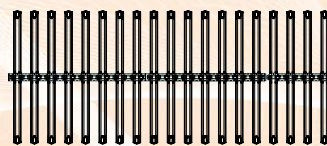
## FREE ROLLER CONVEYOR

Daeyang Rollent's free roller conveyors are user-friendly product with clean appearance and easy to assemble and it provides economical efficiency as well as lightweight.

One Way

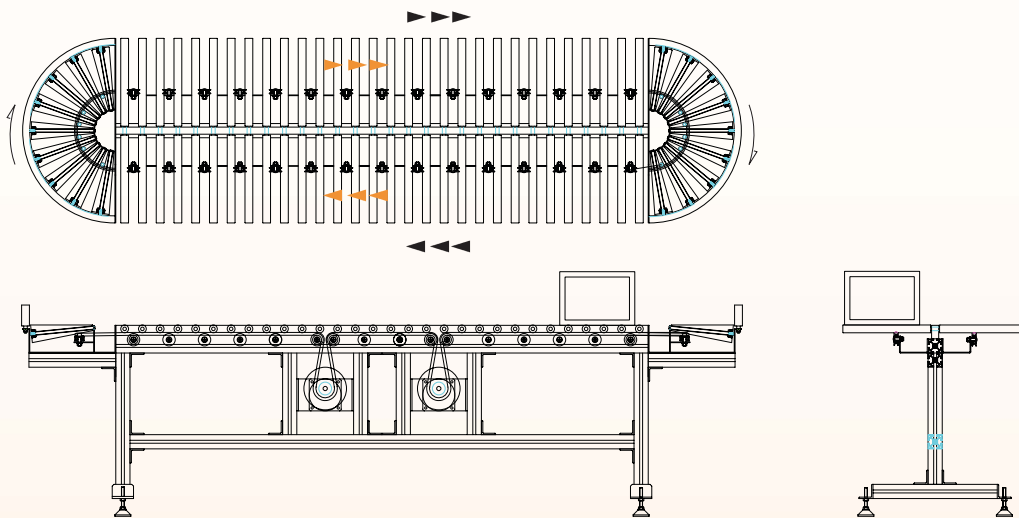


Two Way



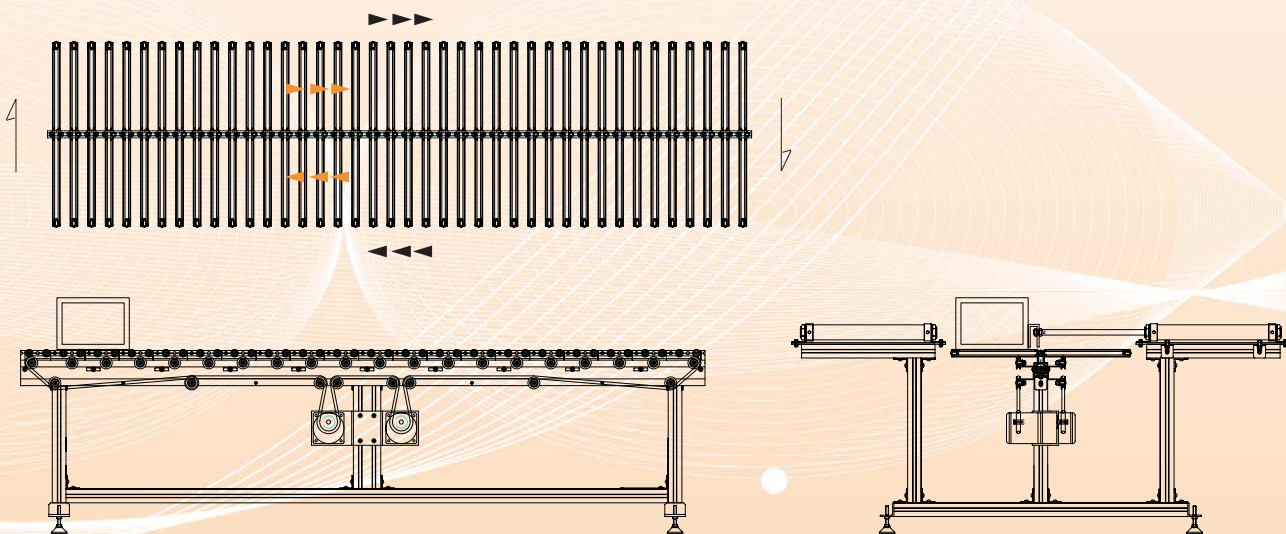
## ONE WAY ROUND CONVEYOR

Daeyang Rollent's one way round conveyor is working by urethane ring belt connection with electric motor. It made a significant breakthrough with economical efficiency as well as lightweight.



## CROSS LINE CONVEYOR

Daeyang Rollent's cross line conveyor is working by urethane ring belt connection with electric motor. It made a significant breakthrough with economical efficiency as well as lightweight.



# LOCATION ; DAEYANG ROLLENT CO., LTD.



● An exporting country



**Head Office** Lot 814, 3 MA, Sihwa Industrial Complex, 2094-14 Jeongwang-Dong, Siheung-Si, Gyeonggi-Do, KOREA  
 TEL : (031)431-7800 FAX : (031)499-7850  
 Homepage : [www.dyrollent.co.kr](http://www.dyrollent.co.kr) E-mail : [rollent@dyrollent.co.kr](mailto:rollent@dyrollent.co.kr)

**Seoul Office** Lot 1514, Da-dong, Joongang Mart 1258, Gurobon-Dong, Guro-Gu, Seoul, KOREA

**Overseas Branch** P&K Mining Equipment PTY. Ltd. / Homebush Bay, NSW2127, Australia. TEL : 61-2-9475-6193

**Overseas Factory** PT. Indonesia Daeyang Rollent / EAST JAVA 61121 , Indonesia. TEL : 62-31-399-0700

**Overseas Agent** McGuire Bearing / Portland(OR), U.S.A TEL : 1-503-238-1570

THE GREATEST MASTERPIECE OF ROLLER





**ROLLENT**  
Daeyang Rollent Co., Ltd.

**Head Office**

Lot 814, 3 MA, Sihwa Industrial Complex, 2094-14 Jeongwang-Dong, Siheung-Si, Gyeonggi-Do, KOREA  
TEL : (031)431-7800 FAX : (031)499-7850  
Homepage : [www.dyrollent.co.kr](http://www.dyrollent.co.kr) E-mail : [rollent@dyrollent.co.kr](mailto:rollent@dyrollent.co.kr)

**Seoul Office**

Lot 1514, Da-dong, Joongang Mart 1258, Gurobon-Dong, Guro-Gu, Seoul, KOREA

**Overseas Branch**

P&K Mining Equipment PTY. Ltd. / Homebush Bay, NSW2127, Australia. TEL : 61-2-9475-6193

**Overseas Factory**

PT. Indonesia Daeyang Rollent / EAST JAVA 61121, Indonesia. TEL : 62-31-399-0700

**Overseas Agent**

McGuire Bearing / Portland(OR), U.S.A TEL : 1-503-238-1570